

ABOUT ACE

ACE for Accident Crash Emergency, is an advanced technologic device for motorcycles that optimizes the emergency rescue process in the immediate aftermath of an accident, regardless of the condition of the victims.



The device uses a technology combining gyroscope, accelerometer and G sensors to detect any suspicious riding activity.



From serious crashes to inconsequential falls it sends an emergency signal to the rescue services if the rider is hurt and unable to do it himself.



ACE comes with various mounting systems to fit any type of motorcycle. Designed to remain discreet, yet 100% reliable, it will not interfere with the rider's experience while preventing further harm.

HOW IT WORKS

The emergency mode is activated when the device detects an unusual shock or suspicious activity thanks to its technology combining gyroscope, accelerometer and G-force sensor.

The emergency signal will automatically start emitting after 120 seconds without the rider's intervention

The circular led flashes red after a shock is detected



Indicate the number of riders on the bike

Internal audible alarm which goes off when the device is on alert mode



Easy opening and safety closure

WHY ACE

Each year more than 4.000 motorcyclists die and almost 100.000 are injured.

Ace aims to reduce these statistics.



Your family and friends want you safe.



Ace optimizes response-time from rescue teams. In a deadly accident, every second counts.

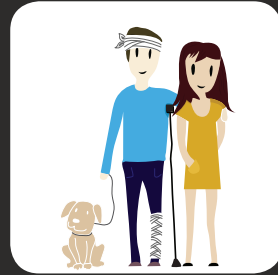


ACE is also built to deal with emergency situations such as the rider not feeling well while riding (e.g heart attack, dizziness, vertigo etc...). The rider would simply press and hold the top button for 5 seconds.

..... We Rescue



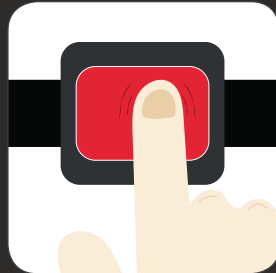
Within 120 sec



..... You're OK?



120 sec



We've Got Your Back



Independent

Waterproof
Fireproof
Dust resistant



Easy to set up
Plug it and ride

Subtle design

